



**KENSINGTON®**

Finest Properties International



## general:

---

<b>object number external:</b>	KBSW23114	<b>as from:</b>	03.12.2024
<b>usage:</b>	business	<b>marketing method:</b>	purchase
<b>property:</b>	flat	<b>construction year:</b>	1914
<b>place:</b>	10713 Berlin	<b>living space:</b>	60,00 m <sup>2</sup>
<b>Floor space:</b>	60,00 m <sup>2</sup>	<b>Number of Rooms:</b>	2,5
<b>Condition:</b>	groomed		

## prices:

---

<b>purchase price:</b>	470.000,00 €	<b>broker's fee:</b>	7,14% inkl. 19% MwSt.
------------------------	--------------	----------------------	-----------------------

## energy certificate:

---

<b>type of energy ID:</b>	VERBRAUCH	<b>expiry date:</b>	2028-12-11
<b>age group:</b>	2014	<b>heating YOC:</b>	1914
<b>value class:</b>	C	<b>beaconing:</b>	gas
<b>primary energy sources:</b>	GAS	<b>energy consumption value:</b>	96.00 kWh/m <sup>2</sup> /a

## contact person:

---

<b>company:</b>	Sven Rhein	<b>name:</b>	Sven Rhein
<b>street:</b>	Zehlendorfer Straße 21	<b>place:</b>	14513 Teltow
<b>phone:</b>	+49 (0) 3328 428 95 96	<b>fax number:</b>	+49 (0) 3328 428 95 98
<b>Email:</b>	berlinsw@kensington-international.com	<b>www:</b>	www.kensington-berlin.com

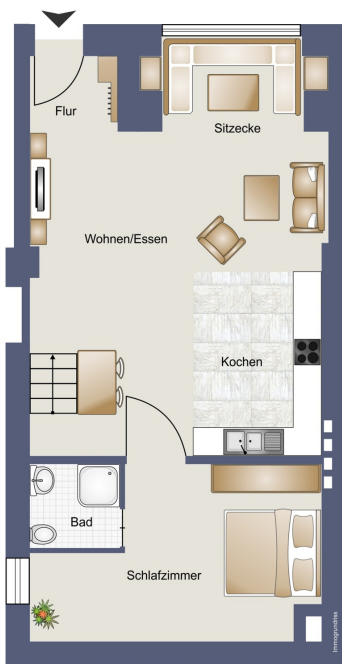
## Infrastructure:

---

<b>Highway :</b>	4 km	<b>Bus at :</b>	1 km
<b>Intercity train station at :</b>	2 km	<b>Airport at :</b>	26 km

# images

Grundrisskizze Erdgeschoss



Grundrisskizze Basement

